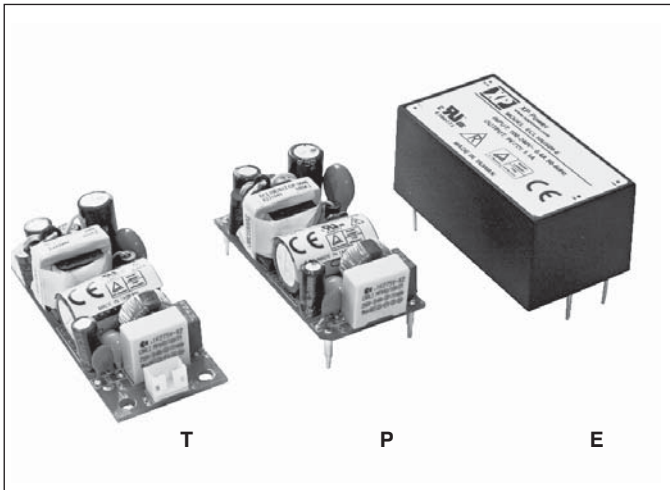


ECL SERIES

AC/DC Single Output: 10 - 25 Watts



Features

- Universal input 90 - 264VAC
- Industry leading ultra compact size
- Industrial safety approvals
- Open frame with JST connector
- Open frame & encapsulated PCB mounting
- Output voltage adjustment - open frame models
- Short circuit and OVP protection
- Harmonic correction EN61000-3-2
- EMC EN55022
- Immunity to EN61000-4
- Class II insulation

General Specifications

Input Voltage:	90 - 264VAC
Efficiency:	75 - 82%
Output Voltage:	3.3 - 48V models
Output Power:	10 - 25 watts
Voltage Adjustment:	±5% (open frame models only)
Line Regulation:	±0.5%
Load Regulation:	±1%
Output Protection:	<ul style="list-style-type: none"> • Current limiting with auto recovery • OVP protection
Isolation:	Input - Output 3000VAC
EMI:	EN55011 & EN55022-B
Immunity:	EN61000-4
Safety:	EN60950
Operating Temp:	-20°C to +50°C at 100% load
Cooling:	Convection cooled
Dimensions: (L x W x H)	ECL10-P: 51 x 26 x 19mm ECL10-E: 53 x 28 x 23mm ECL10-T: 67 x 26 x 19mm ECL15-P: 64 x 32 x 19mm ECL15-E: 65 x 37 x 25mm ECL15-T: 79 x 32 x 19mm ECL25-P: 76 x 36 x 23mm ECL25-E: 79 x 36 x 28mm ECL25-T: 89 x 36 x 26mm
Weight:	7 to 9 grams

Description

The ECL series power supplies provide industry with an ultra compact product, with three power levels of 10, 15 and 25 watts.

Available in three packages:

Open Frame with JST connector.

Open Frame PCB mounting.

Encapsulated PCB Mounting.

These three options provide the best solution and choice in OEM applications for single output low power designs.

Units can operate with zero load, output voltage adjustment is standard on the open frame units and, with Class II insulation you have a high performance product.

- **For more detailed information on the ECL series, visit our website.**

Options

Cable Harness: Cable harness with 300mm length available for T Models: ECL10-LOOM-KIT, ECL15-LOOM-KIT, ECL25-LOOM-KIT

Model	Output		Power W
	V	A	
ECL10US03	3.3V	2.6A	8.6W
ECL10US05	5V	2.0A	10W
ECL10US09	9V	1.1A	10W
ECL10US12	12V	0.83A	10W
ECL10US15	15V	0.67A	10W
ECL10US24	24V	0.42A	10W
ECL10US48	48V	0.21A	10W
ECL15US03	3.3V	3.0A	10W
ECL15US05	5V	3.0A	15W
ECL15US09	9V	1.67A	15W
ECS15US12	12V	1.25A	15W
ECL15US15	15V	1.0A	15W
ECL15US24	24V	0.63A	15W
ECL15US48	48V	0.32A	15W
ECL25US03	3.3V	6.0A	20W
ECL25US05	5V	5.0A	25W
ECL25US09	9V	2.8A	25W
ECL25US12	12V	2.1A	25W
ECL25US15	15V	1.67A	25W
ECL25US24	24V	1.04A	25W
ECL25US48	48V	0.52A	25W

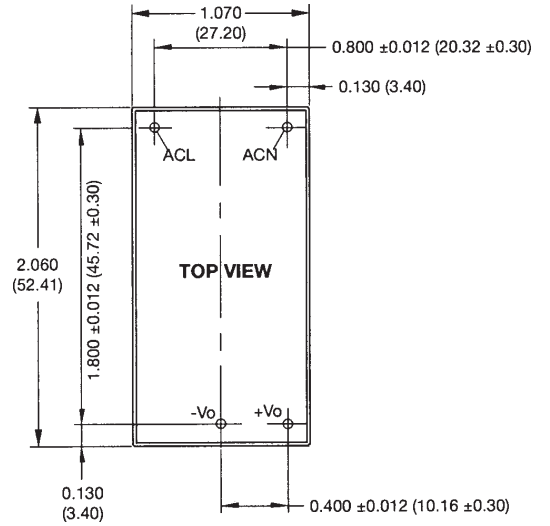
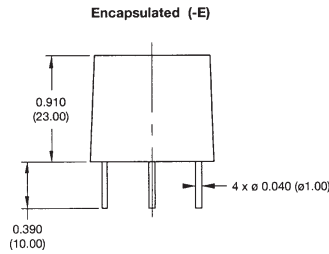
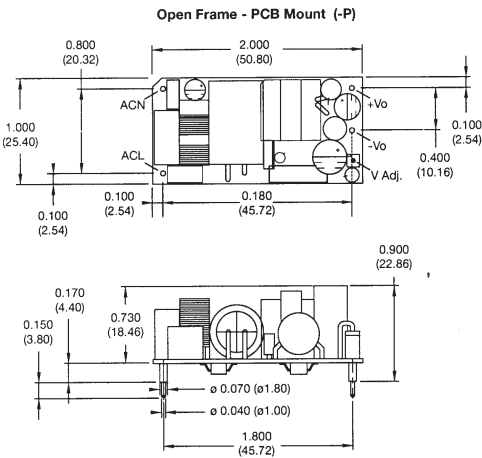
Notes:

1. Add - P to model for Open Frame PCB mounting.
2. Add - E to model for Encapsulated PCB mounting.
3. Add - T to model for Open Frame with JST connector

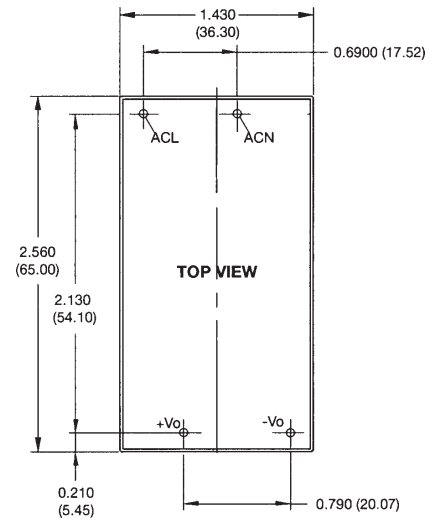
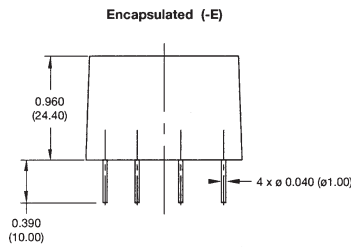
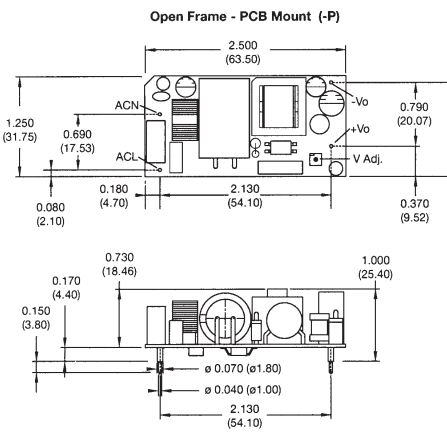
ECL SERIES

AC/DC Single Output: 10 - 15 Watts

ECL10



ECL15



ECL25

