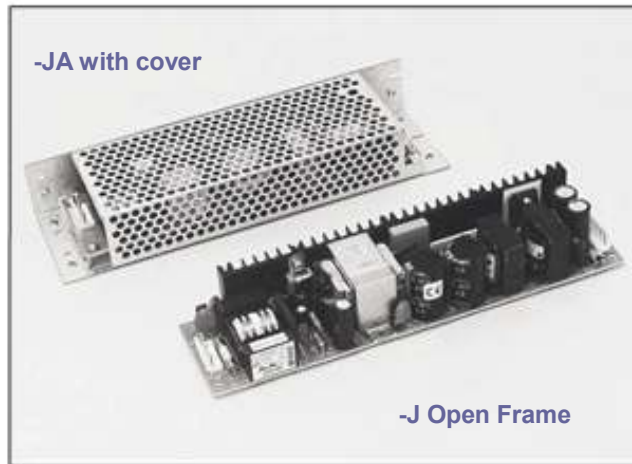


ZWS SERIES

AC/DC Single Output: 5 - 150 Watts



Specifications

INPUT VOLTAGE:	85 - 264 VAC: ZWS5 - ZWS50 110/230VAC auto select for models ZWS75 - ZWS150 110-330 VDC: ZWS5 - ZWS50 220-330 VDC: ZWS75 - ZWS150
HARMONICS:	EN61000-3-2 for ZWS75 - ZWS150
FREQUENCY:	47 - 63Hz (5 - 50W 47 - 440Hz)
EFFICIENCY:	Model dependent 65-80%
OUTPUT POWER:	5~150 watts
OUTPUT VOLTAGE:	3.3V~48V models: refer to table
OUTPUT V. ADJUSTMENT:	Typically ±10% of nominal
LINE REGULATION:	Typically ±0.4% over input range
LOAD REGULATION:	Typically ±0.6% from no load to full load.
MINIMUM LOAD:	Units will operate with zero load
TEMP. CO-EFFICIENT:	0.02% per °C
OUTPUT NOISE:	Typically 1% of nominal V out
OVP ZWS50 - ZWS150:	OVP will shutdown unit, manual reset by AC line recycle
OVP ZWS5 - ZWS30:	OVP: Zener shutdown
OVERLOAD PROTECTION:	Short circuit protection, fold back set at approx. 110% of output with auto recovery. Some models with optional "Constant Current"
HOLD UP TIME:	Typically 20ms at rated power and input
START UP TIME:	Typically 300 ms
PARALLEL OPERATION:	No
SERIES OPERATION:	Yes
OPERATING TEMP:	-10°C to +50°C at full load. Derate from 50°C to 60°C
COOLING:	Convection cooled
ISOLATION:	Input - output 3000VAC Input - chassis 2000VAC Output - frame 500VAC
VIBRATION & SHOCK:	2G constant operating, <20G shock
SAFETY:	Approved to IEC950, EN60950, UL1950, AS3260
EMI/RFI:	EN55011 - B / EN55022 - B
CONNECTIONS:	Plug-in connector/cable harness
CABLE HARNESS PART NO's:	H-IN-5L: Input 5~150W models H-OU-8L: Output 5~15W models H-OU-9L: Output 30~50W models H-OU-18L: Output 75W models H-OU-9L: Output 120W models H-OU-10L: Output 100W models H-OU-11L: Output 150W models H-OU-12L: Output 150W models

Features

- Universal input 85 - 264VAC ZWS5 - ZWS50 models •
- Power levels from 5~150 watts
- Wide range of voltage selections 3.3V~48V
- Harmonic current per EN61000-3-2
- Floating output, fully isolated.
- EMC to EN55011-B
- Immunity to EN61000-4-2, -3, -4, -5, -6
- EN60950, UL 1950, AS3260 No.CS7067N certification •
- Convection cooled
- OVP and overload protection
- Open frame PCB or vented case package options •
- Suitable for a wide range of industrial, automation and telecom applications

Dimensions:

	L	W	H	Weight:
	Open Frame			
ZWS5	98	45	21mm	65g
ZWS10	105	50	21mm	75g
ZWS15	125	50	21mm	95g
ZWS30	133	55	26mm	200g
ZWS50	195	55	26mm	250g
ZWS75	222	55	35mm	320g
ZWS100	222	62	35mm	360g
ZWS120	208	80	40mm	380g
ZWS150	222	75	40mm	510g
	Vented Case			
ZWS5-A	118	52	32mm	180g
ZWS10-A	125	57	32mm	200g
ZWS15-A	145	57	32mm	300g
ZWS30-A	163	65	36mm	370g
ZWS50-A	225	65	36mm	500g
ZWS75-A	252	65	42mm	900g
ZWS100-A	253	72	45mm	900g
ZWS120-A	236	90	47mm	1200g
ZWS150-A	252	85	47mm	1400g

ZWS SERIES

AC/DC Single Output: 5 - 150 Watts

MODEL	Output		Power W
	V	A	
ZWS5 - 3 - JA	3.3V	1.0A	3W
ZWS5 - 5 - JA	5V	1.0A	5W
ZWS5 - 12 - JA	12V	0.42A	5W
ZWS5 - 15 - JA	15V	0.34A	5W
ZWS5 - 24 - JA	24V	0.22A	5W
ZWS10 - 3 - JA	3.3V	2.0A	6.6W
ZWS10 - 5 - JA	5V	2.0A	10W
ZWS10 - 12 - JA	12V	0.85A	10W
ZWS10 - 15 - JA	15V	0.7A	10W
ZWS10 - 24 - JA	24V	0.45A	10W
ZWS15 - 3 - JA	3.3V	3.0A	10W
ZWS15 - 5 - JA	5V	3.0A	15W
ZWS15 - 12 - JA	12V	1.25A	15W
ZWS15 - 15 - JA	15V	1.0A	15W
ZWS15 - 24 - JA	24V	0.65A	15W
ZWS30 - 3 - JA	3.3V	6.0A	20W
ZWS30 - 5 - JA	5V	6.0A	30W
ZWS30 - 12 - JA	12V	2.5A	30W
ZWS30 - 15 - JA	15V	2.0A	30W
ZWS30 - 24 - JA	24V	1.3A	30W
ZWS30 - 36 - JA	36V	0.9A	30W
ZWS30 - 48 - JA	48V	0.7A	30W
ZWS50 - 3 - JA	3.3V	10.0A	33W
ZWS50 - 5 - JA	5V	10.0A	50W
ZWS50 - 12 - JA	12V	4.3A	50W
ZWS50 - 15 - JA	15V	3.5A	50W
ZWS50 - 24 - JA	24V	2.1A	50W
ZWS50 - 36 - JA	36V	1.4A	50W
ZWS50 - 48 - JA	48V	1.1A	50W

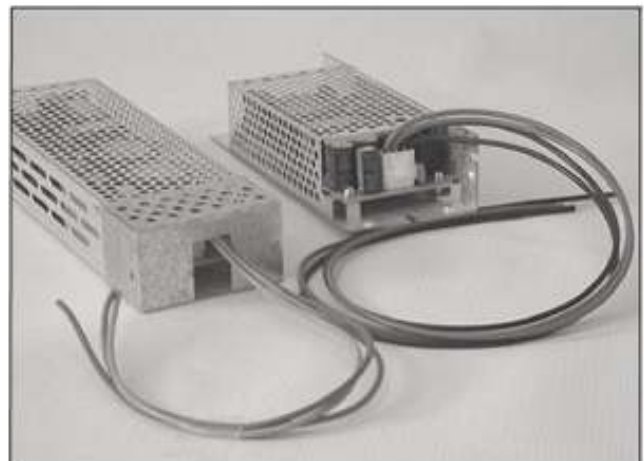
- J = JST type connector
- A = vented case
- Peak A output set at approx. 120% for 30 sec. maximum

MODEL	Output		Power W
	V	A	
ZWS75PF - 3 - JA	3.3V	15.0A	50W
ZWS75PF - 5 - JA	5V	15.0A	75W
ZWS75PF - 9 - JA	9V	8.3A	75W
ZWS75PF - 12 - JA	12V	6.3A	75W
ZWS75PF - 15 - JA	15V	5.0A	75W
ZWS75PF - 24 - JA	24V	3.2A	75W
ZWS75PF - 28 - JA	28V	2.7A	75W
ZWS75PF - 36 - JA	36V	2.1A	75W
ZWS75PF - 48 - JA	48V	1.6A	75W
ZWS100PF - 3 - JA	3.3V	20.0A	66W
ZWS100PF - 5 - JA	5V	20.0A	100W
ZWS100PF - 9 - JA	9V	11.1A	100W
ZWS100PF - 12 - JA	12V	8.5A	100W
ZWS100PF - 15 - JA	15V	6.7A	100W
ZWS100PF - 24 - JA	24V	4.3A	100W
ZWS100PF - 28 - JA	28V	3.6A	100W
ZWS100PF - 36 - JA	36V	2.8A	100W
ZWS100PF - 48 - JA	48V	2.1A	100W
ZWS150PF - 3 - JA	3.3V	30.0A	100W
ZWS150PF - 5 - JA	5V	30.0A	150W
ZWS150PF - 12 - JA	12V	12.5A	150W
ZWS150PF - 15 - JA	15V	10.0A	150W
ZWS150PF - 24 - JA	24V	6.3A	150W
ZWS150PF - 28 - JA	28V	5.4A	150W
ZWS150PF - 36 - JA	36V	4.2A	150W
ZWS150PF - 48 - JA	48V	3.2A	150W

MODEL	Output		Power W
	V	A	
ZWS120PPF - 24 - A	24V	5A / 10A	120W
ZWS120PPF - 28 - A	28V	4.3 / 8.6A	120W
ZWS120PPF - 36 - A	36V	3.4A / 6.7A	120W



Alternative case - see BDA Series page 78-79

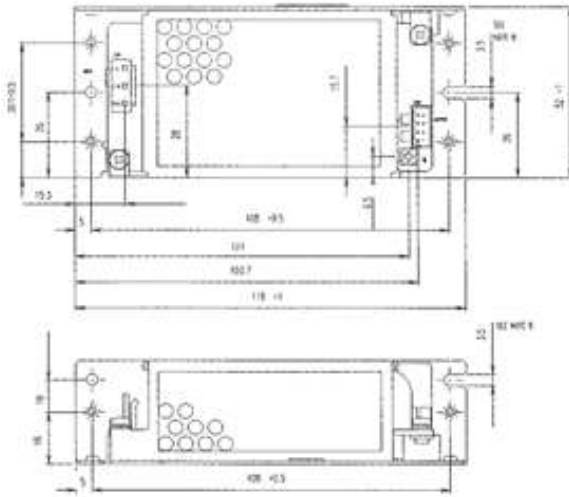


1. Optional AC terminal cover kit (50 - 150W)
2. Optional cable harness

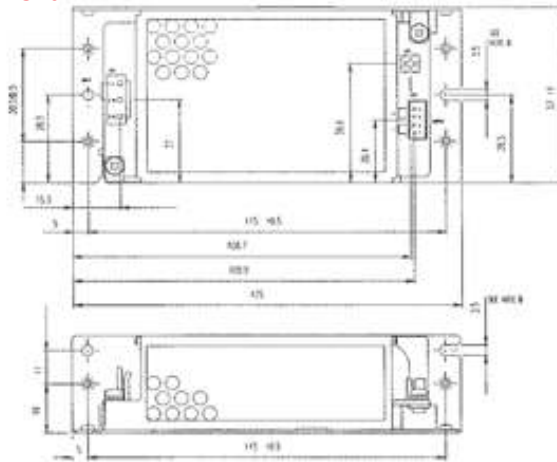
ZWS SERIES

AC/DC Single Output: 5 - 150 Watts

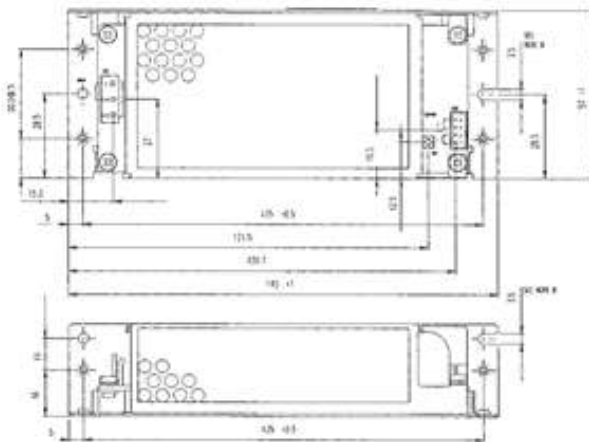
ZWS5



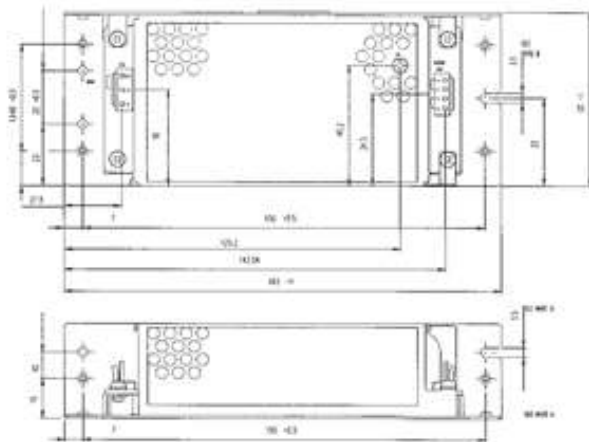
ZWS10



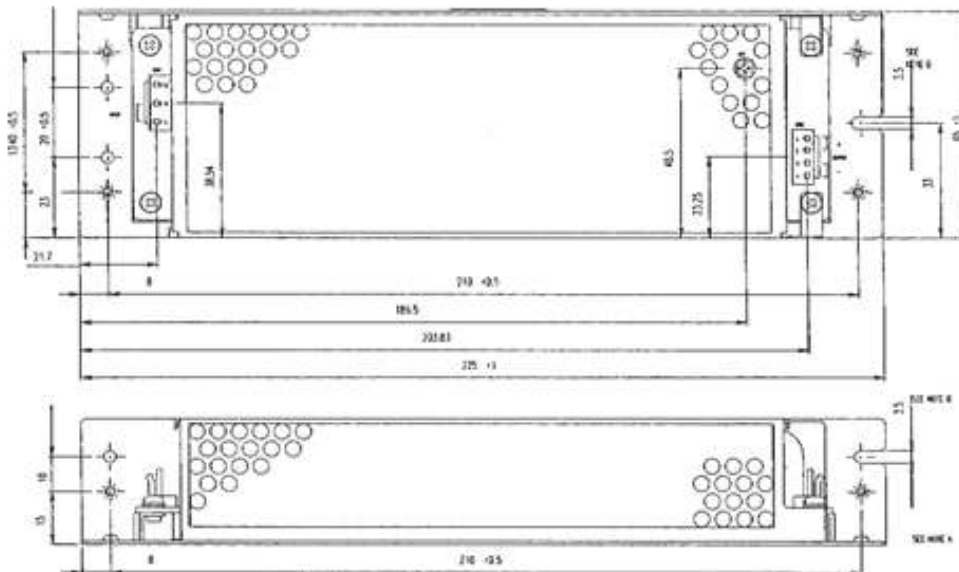
ZWS15



ZWS30



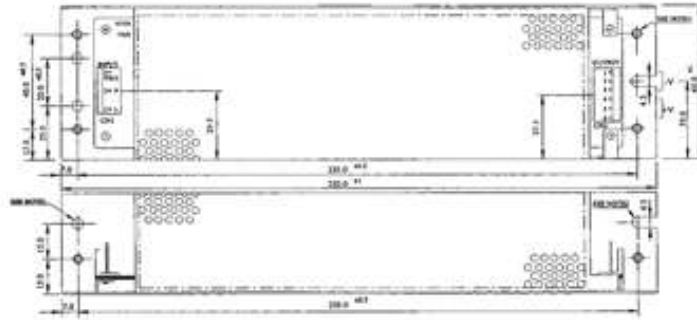
ZWS50



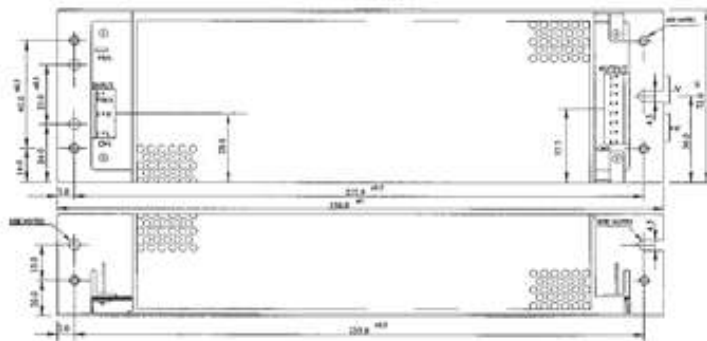
ZWS SERIES

AC/DC Single Output: 5 - 150 Watts

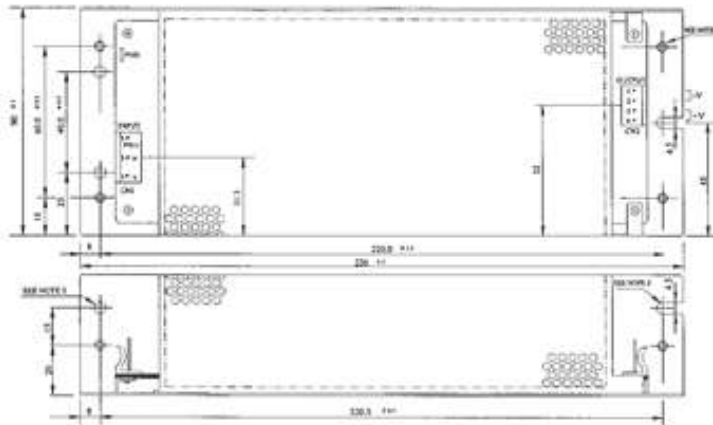
ZWS75



ZWS100



ZWS120



ZWS150

