



SR100i shown



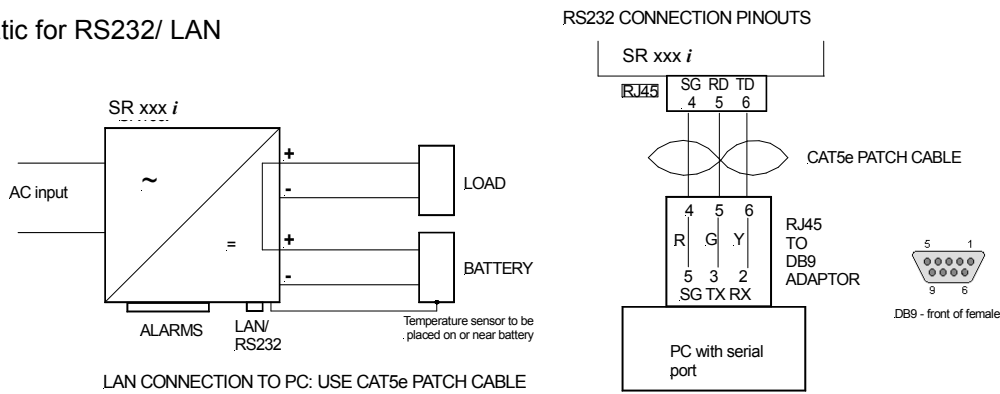
Optional protocol converter

◆ 24 Month Warranty

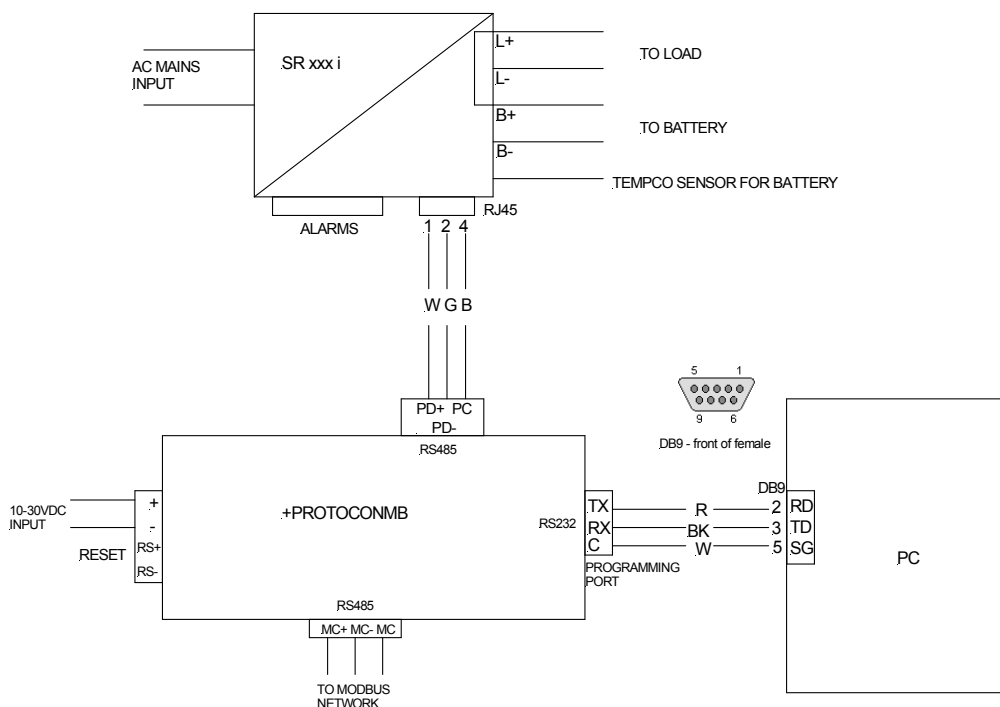
- Choice of RS485, RS232 or ethernet
- ASCII, Modbus or SNMP available
- Modbus protocol converter available for use with RS485 output
- Remote live monitoring of output voltage, battery & PSU current, battery temperature, alarm conditions
- 9 alarm state signals / 4 command functions
- Remote enable/disable/initiation of battery condition test
- Programming port for initial setup & local monitoring using PC
- BCT (battery condition test) may be enabled or disabled by user
- BCT applies only to No-Break™ DC versions

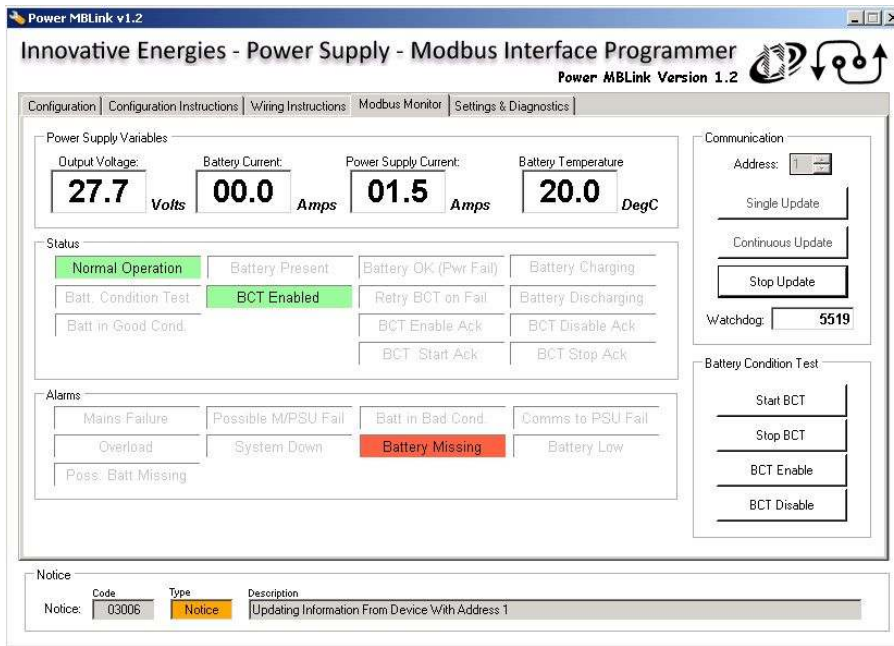
**SPECIFICATIONS:** Please refer to: 1. SR\*\*\*C data sheets for full specifications on power supplies.  
2. +PROTOCONMB data sheets for full specifications on protocol converters.

### 1. Block schematic for RS232/ LAN

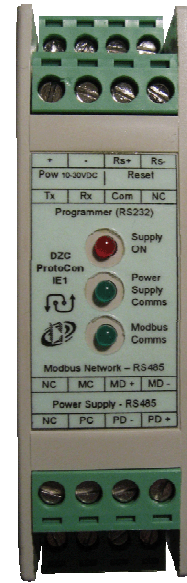


### 2. Block schematic for RS485 with protocol converter





Typical screen shot using Modbus protocol converter



Optional protocol converter +PROTOCONMB shown

### ALARM CONDITIONS DISPLAYED

- Mains Failure
- Possible Mains/PSU Fail
- Battery in Bad Condition
- Communications to PSU Fail (eg. on LV disconnect)
- Overload
- System Down
- Battery Missing
- Battery Low
- Possible Battery Missing

### COMMAND FUNCTIONS

- BCT Enable
- BCT Disable
- BCT Start
- BCT Stop

### OPTIONS

**Communication Protocols available from PSU/charger**

RS485, RS232, LAN versions transmit IE proprietary ASCII code. LAN+ version is SNMP compatible

**Modbus Protocol Converter**

Protocol Converter for use with comms. output from PSU, with programming port for PC & Modbus compatible output. **Power MBLink** setup software included.

Modbus protocol versions available:

- RTU
- TCP/IP

Codes: **+PROTOCONMB**: supports Modbus RTU on RS485 link

**+PROTOCONMB-OE**: supports Modbus RTU on RS485 or RS232 link and Modbus TCP/IP over ethernet

**Standard DC power supply**

SR\*\*\* L versions, without **No-Break™** features, available with 3 alarms and communications port.

### MODEL CODING AND SELECTION CHART

**SR250 i 12 T F S L 485**

Type of communications interface port: 485 = RS485, 232 = RS232, LAN = Ethernet (ASCII), LAN+ = Ethernet (SNMP)

