

# DLP SERIES

## AC/DC Single Output Din Rail: 75-240 Watts



### Features

- Universal input 90~264VAC (180-240W models)
- Five power levels, 75-240 watts
- Harmonics to EN61000-3-2
- EMI/RFI: EN55022-B
- EN60950 safety standard
- CE marked
- Compact size
- LED indicators for power on
- LED indicator Red: overload
- Fully regulated outputs
- Zero load operation
- Short circuit protection
- Overvoltage protection
- Convection cooled
- Alternative model eg. DLP75-24-1 (with screw/lug type terminal connector)

MODEL	Output		Power W
	V	A	
DLP75-24-1EJ	24V	3.1A	75W
DLP100-24-1EJ	24V	4.1A	100W
DLP120-24-1EJ	24V	5A	120W
DLP180-24-1EJ	24V	7.5A	180W
DLP240-24-1EJ	24V	10A	240W

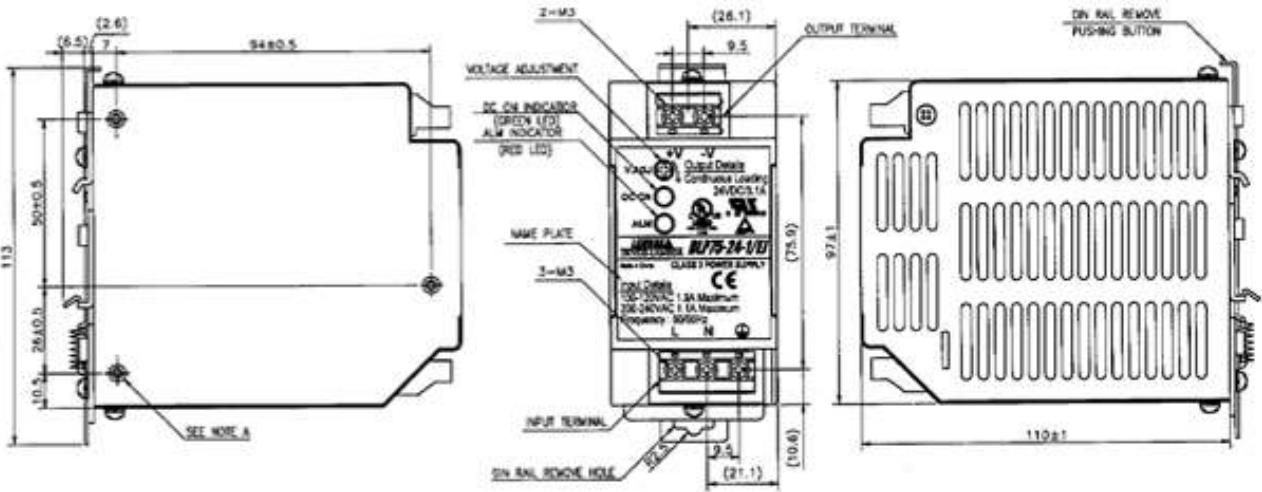
### Specifications

<b>INPUT :</b>	110/240 VAC Auto Select: 75~120 watts 85~264 VAC: 180~240 watts 120~370 VDC: 180~240 watts
<b>FREQUENCY:</b>	47 ~ 63Hz
<b>OUTPUT VOLTAGE:</b>	24 VDC
<b>INDICATOR:</b>	LED - Green (Power On) LED - Red (Alarm)
<b>OUTPUT V. RANGE:</b>	21.6~28V
<b>OUTPUT POWER:</b>	75~240 watts, refer to table
<b>EFFICIENCY:</b>	Model dependent 82-87%
<b>INPUT CURRENT (230V):</b>	DLP75: 0.8A. DLP100-120: 1.4A DLP180-240: 1.3A
<b>INPUT HARMONICS:</b>	EN61000-3-2
<b>RIPPLE &amp; NOISE:</b>	240mV pk-pk
<b>LOAD REGULATION:</b>	192mV maximum
<b>TEMP CO-EFFICIENT:</b>	Maximum 0.05% per°C
<b>OVERCURRENT PROTECTION:</b>	DLP75: Foldback current limiting with auto recovery. DLP100-240: Constant current limiting with auto recovery.
<b>OVERVOLTAGE PROTECTION:</b>	OVP circuit will shutdown output. Recycle AC power after 30 secs to restart
<b>HOLD-UP TIME:</b>	20/30ms @ 100/230 VAC
<b>LEAKAGE CURRENT:</b>	0.75mA maximum
<b>PARALLEL OPERATION:</b>	No
<b>SERIES OPERATION:</b>	Yes
<b>OPERATING TEMPERATURE:</b>	-10°C to +50°C at 100% load, derate to 60% load at 60°C
<b>HUMIDITY:</b>	30~90% RH operating
<b>COOLING:</b>	Convection cooled
<b>ISOLATION VOLTAGE:</b>	Input-Output: 3000 VAC Input-Ground: 2000 VAC Output-Ground: 500 VAC
<b>SAFETY:</b>	UL60950, EN60950, UL508, EN50178
<b>EMI:</b>	EN55011/EN55022-B
<b>IMMUNITY:</b>	EN61000-6-2
<b>WEIGHT:</b>	DLP75: 40g. DLP100: 540g. DLP120: 540g. DLP180: 780g. DLP240: 1kg.
<b>DIMENSIONS: (W x H x D)</b>	DLP75: 50 x 113 x 110mm DLP100: 60 x 113 x 110mm DLP120: 60 x 113 x 110mm DLP180: 80 x 113 x 110mm DLP240: 120 x 113 x 110mm

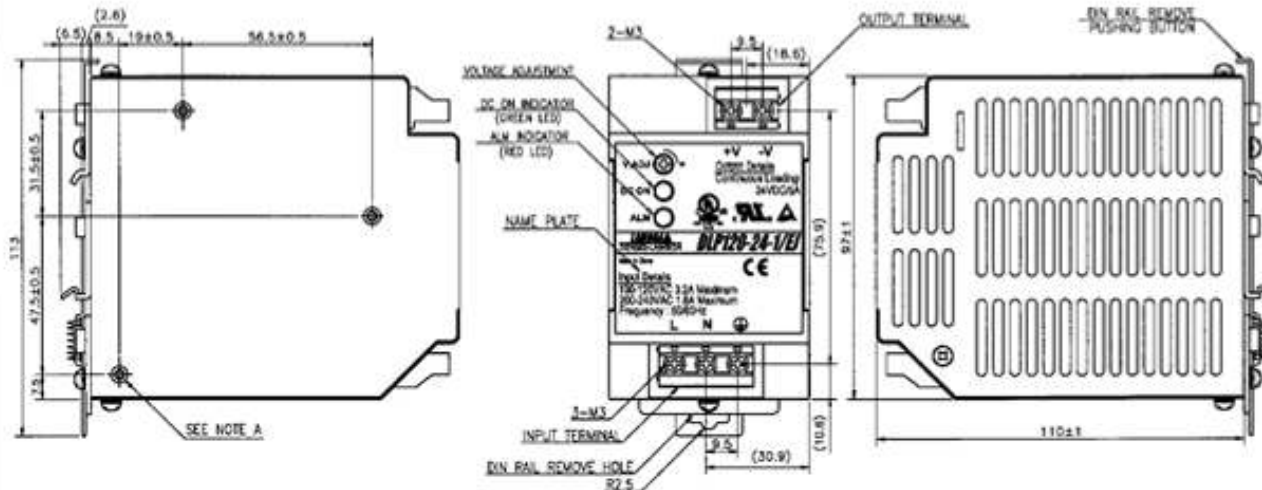
# DLP SERIES

## AC/DC Single Output Din Rail: 75-240 Watts

### DLP75



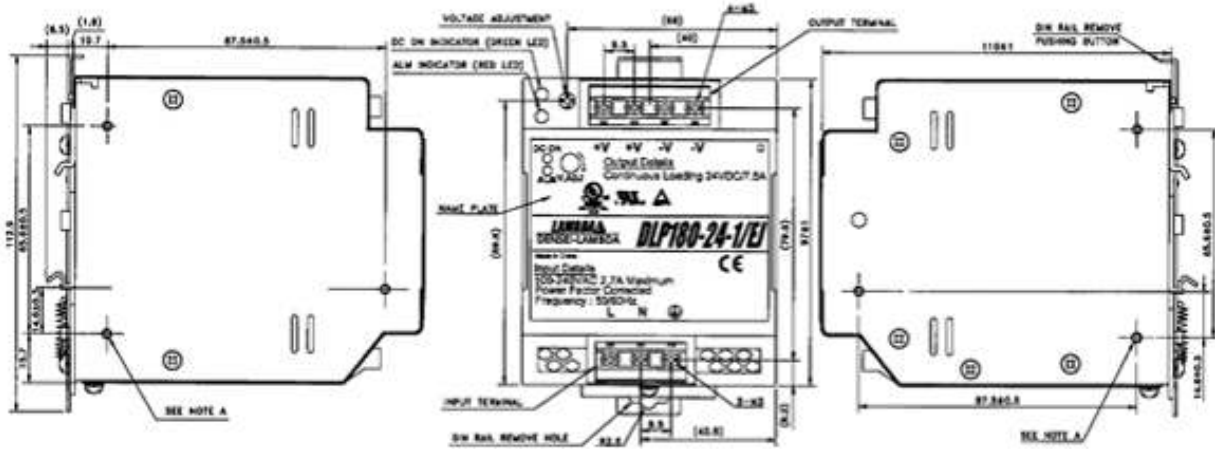
### DLP100/DLP120



# DLP SERIES

AC/DC Single Output Din Rail: 75-240 Watts

## DLP180



## DLP240

