

HWS SERIES

AC/DC Single Output: 15 - 150 Watts



Features

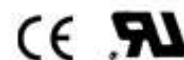
- Universal input 85~264VAC
- 5th generation design (RoHS compliant)
- Power levels of 15~150 watts
- Harmonics to EN61000-3-2
- EMI/RFI: EN55022-B
- International safety approvals and CE marked
- Amongst the most compact units on the market
- Fully regulated outputs & Zero load operation
- Short circuit protection & overvoltage protection • Convection cooled

Specifications

| | |
|--|---|
| INPUT VOLTAGE: | 85~264 VAC 120~370 VDC |
| FREQUENCY: | 47~ 63Hz |
| OUTPUT VOLTAGE: | See table |
| INDICATOR: | Power ON LED |
| OUTPUT V RANGE: | See table (typically $\pm 10\%$) |
| OUTPUT POWER: | 50~150 watts |
| EFFICIENCY: | Model dependent, typically 70~86% |
| INPUT CURRENT (at 230VAC): | HWS15: 0.15A HWS30 & HWS50: 0.3A HWS100: 0.45A HWS150: 0.65A |
| INRUSH CURRENT: | 28A at 230 VAC cold start |
| INPUT HARMONICS: | EN61000-3-2 |
| RIPPLE & NOISE: | Model dependent: 120~200mV |
| LOAD REGULATION: | Typically $\pm 0.8\%$ |
| OVERCURRENT PROTECT: | Current limiting with auto recovery set at approx. 120% Of rating-fold back |
| OVERVOLTAGE PROTECT: | OVP circuit will shutdown. Recycle AC supply to reset after 30 seconds |
| HOLD-UP TIME: | Typically 20ms at 230VAC |
| LEAKAGE CURRENT: | 0.5mA at 230 VAC |
| REMOTE SENSE: | HWS100 & HWS150 |
| PARALLEL OPERATION: | Contact office for details |
| OPERATING TEMP: | -10°C to +50°C @ 100% load, and up to 70°C at 20% load |
| HUMIDITY: | 30-90% RH |
| COOLING: | Convection cooled |
| ISOLATION VOLTAGE: | Input - output: 3000 VAC Input - ground: 2000 VAC Output - ground: 500 VAC |
| SAFETY: | Approval to: UL1950, EN60950, EN50178 |
| EMI: | EN55022/EN55011 level B |
| IMMUNITY: | EN61000-4-2, -3, -4, -5, -6, -8, -11 |
| DIMENSIONS & WEIGHT: (L x W x H) | HWS15: 99 x 82 x 32mm, 189g HWS30: 114 x 82 x 32mm, 220g HWS50: 139 x 82 x 32mm, 280g HWS100: 179 x 82 x 33mm, 450g HWS150: 179 x 82 x 42mm, 500g |

| MODEL | Output | | | Power W |
|--------------|--------|-------|-------------|---------|
| | V | A | (V Range) | |
| HWS15 - 3A | 3.3V | 3A | 2.9 - 3.9V | 10W |
| HWS15 - 5A | 5V | 3A | 4 - 6V | 15W |
| HWS15 - 12A | 12V | 1.3A | 9.6 - 14.4V | 15W |
| HWS15 - 15A | 15V | 1A | 12 - 18V | 15W |
| HWS15 - 24A | 24V | 0.65A | 19 - 28.8V | 15W |
| HWS15 - 48A | 48V | 0.33A | 38 - 52.8V | 15W |
| HWS30 - 3A | 3.3V | 6A | 2.9 - 3.9V | 20W |
| HWS30 - 5A | 5V | 6A | 4 - 6V | 30W |
| HWS30 - 12A | 12V | 2.5A | 9.6 - 14.4V | 30W |
| HWS30 - 15A | 15V | 2A | 12 - 18V | 30W |
| HWS30 - 24A | 24V | 1.3A | 19 - 28.8V | 30W |
| HWS30 - 48A | 48V | 0.65A | 38 - 52.8V | 30W |
| HWS50 - 3A | 3.3V | 10A | 2.9 - 3.9V | 33W |
| HWS50 - 5A | 5V | 10A | 4 - 6V | 50W |
| HWS50 - 12A | 12V | 4.3A | 9.6 - 14.4V | 50W |
| HWS50 - 15A | 15V | 3.5A | 12 - 18V | 50W |
| HWS50 - 24A | 24V | 2.2A | 19 - 28.8V | 50W |
| HWS50 - 48A | 48V | 1.1A | 38 - 52.8V | 50W |
| HWS100 - 3A | 3.3V | 20A | 2.9 - 3.9V | 66W |
| HWS100 - 5A | 5V | 20A | 4 - 6V | 100W |
| HWS100 - 12A | 12V | 8.5A | 9.6 - 14.4V | 100W |
| HWS100 - 15A | 15V | 7A | 12 - 18V | 100W |
| HWS100 - 24A | 24V | 4.5A | 19 - 28.8V | 100W |
| HWS100 - 48A | 48V | 2.1A | 38 - 52.8V | 100W |
| HWS150 - 3A | 3.3V | 30A | 2.9 - 3.9V | 100W |
| HWS150 - 5A | 5V | 30A | 4 - 6V | 150W |
| HWS150 - 12A | 12V | 13A | 9.6 - 14.4V | 150W |
| HWS150 - 15A | 15V | 10A | 12 - 18V | 150W |
| HWS150 - 24A | 24V | 6.5A | 19 - 28.8V | 150W |
| HWS150 - 48A | 48V | 3.3A | 38 - 52.8V | 150W |

- Medical Grade Option add -ME to model
- Industrial Grade Option add -HD to model



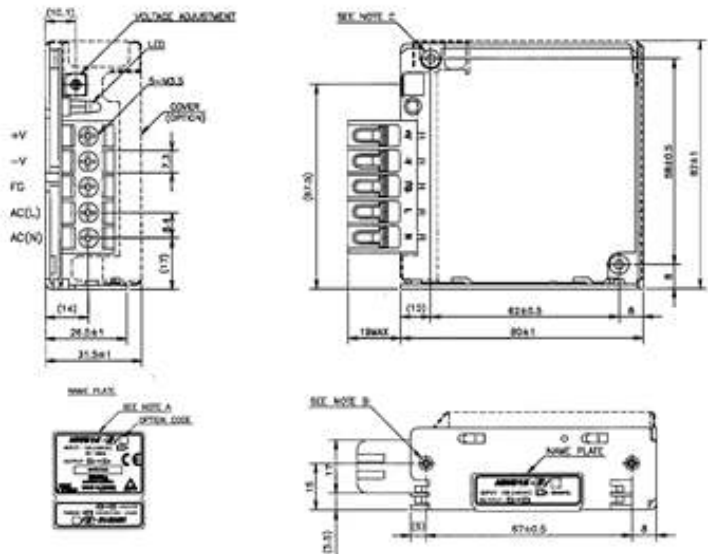
HWS SERIES

AC/DC Single Output: 15 - 150 Watts

HWS15

NOTES

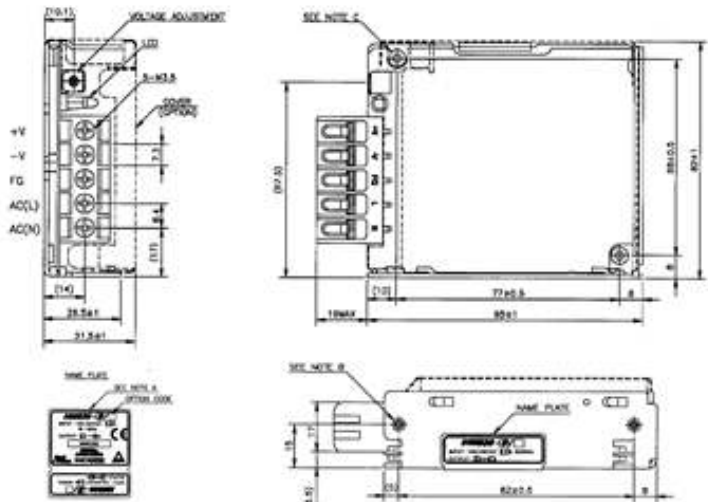
- A : MODEL NAME, OPTION, INPUT VOLTAGE RANGE, NOMINAL OUTPUT VOLTAGE, MAXIMUM OUTPUT CURRENT AND COUNTRY OF MANUFACTURE ARE SHOWN HERE IN ACCORDANCE WITH THE SPECIFICATIONS.
- B : M3 EMBOSSED, TAPPED AND COUNTERSUNK HOLES (2) FOR CUSTOMER CHASSIS MOUNTING. SCREWS MUST NOT PROTRUDE INTO POWER SUPPLY BY MORE THAN 6m/m.
- C : M3 TAPPED HOLES (2) FOR CUSTOMER CHASSIS MOUNTING. SCREWS MUST NOT PROTRUDE INTO POWER SUPPLY BY MORE THAN 6m/m.



HWS30

NOTES

- A : MODEL NAME, OPTION, INPUT VOLTAGE RANGE, NOMINAL OUTPUT VOLTAGE, MAXIMUM OUTPUT CURRENT AND COUNTRY OF MANUFACTURE ARE SHOWN HERE IN ACCORDANCE WITH THE SPECIFICATIONS.
- B : M3 EMBOSSED, TAPPED AND COUNTERSUNK HOLES (2) FOR CUSTOMER CHASSIS MOUNTING. SCREWS MUST NOT PROTRUDE INTO POWER SUPPLY BY MORE THAN 6m/m.
- C : M3 TAPPED HOLES (2) FOR CUSTOMER CHASSIS MOUNTING. SCREWS MUST NOT PROTRUDE INTO POWER SUPPLY BY MORE THAN 6m/m.



HWS50

NOTES

- A : MODEL NAME, OPTION, INPUT VOLTAGE RANGE, NOMINAL OUTPUT VOLTAGE, MAXIMUM OUTPUT CURRENT AND COUNTRY OF MANUFACTURE ARE SHOWN HERE IN ACCORDANCE WITH THE SPECIFICATIONS.
- B : M3 EMBOSSED, TAPPED AND COUNTERSUNK HOLES (2) FOR CUSTOMER CHASSIS MOUNTING. SCREWS MUST NOT PROTRUDE INTO POWER SUPPLY BY MORE THAN 6m/m.
- C : M3 TAPPED HOLES (2) FOR CUSTOMER CHASSIS MOUNTING. SCREWS MUST NOT PROTRUDE INTO POWER SUPPLY BY MORE THAN 6m/m.

