

FPS SERIES

AC/DC Single Output: 1000 - 3000 Watts



1U Rack

Features

- Low profile, 1U height
- One, two or three 1 KW modules per 1U Rack • Hot-swap capability
- Parallel operation with power share between modules • Built-in redundancy diodes for n+1 applications • High efficiency
- RoHS compliant
- Universal input and PFC
- Full array of signals
- LED front panel: AC OK, DC OK, DC Fail
- Optional IEC front panel AC input connector or rear connector (Positronic)
- CE Marked. EN60950 safety approvals
- Suitable for use as combined power supply and Battery Charger in high-end DC Back-up systems
- Alarm Signals
- I²C Bus interface option: add "S" to 1Kw module eg. FPS1000-24PS, FPS1000-24S
- To order rack with two or three floating output voltages per rack, consult.

SIZE - MODULE:	295 x 129 x 41mm (LWH) 320 x 129 x 41mm with handle
SIZE - RACK:	Rack Assembly: 482.5 x 384 x 43.6mm (LDH)
WEIGHT:	1KW module: 2 Kg. Rack: 3.5Kg

Specifications

INPUT VOLTAGE:	85 - 264 VAC, 120 - 380 VDC
INPUT FREQUENCY:	47 - 63Hz (440Hz with reduced PFC)
INRUSH CURRENT:	40A maximum
LEAKAGE CURRENT:	1.1mA at 230VAC
HOLD UP TIME:	20ms typically (800W load)
EFFICIENCY:	Model dependant 83 - 88%
HARMONICS:	EN61000-3-2 Class A
POWER FACTOR:	0.98 at full load
IMMUNITY:	EN61000-4 -2, -3, -4, -5, -6, -11
EMC:	EN55022 Level B, conducted & radiated
OUTPUT VOLTAGE:	24VDC (21.5 - 29) 32VDC (28.8 - 38.4) 48VDC (43 - 58)
AUXILIARY OUTPUT:	An isolated 12V output is provided at 0.25A with built-in Oring diodes
OUTPUT POWER:	1000W per module (3000W per rack)
LINE REGULATION:	±0.5%
LOAD REGULATION:	±0.8%
OUTPUT NOISE:	300mV (24V), 250mV (32V), 300mV (48V)
OVERVOLTAGE PROTECTION:	YES. Set at 130-140% of nominal V out. Recycle input after 30-60 sec to re-start
OVERLOAD PROTECTION:	Constant current, with auto-recovery, set at 105-125% of nominal rating
OVERTEMP. PROTECTION:	Output shuts down when temperature exceeds safe limits, with auto recovery
LOAD SHARING:	Single wire power share with up to eight units
REMOTE SENSE:	Compensates up to 1V on each output lead
I ² C MONITORING:	Optional monitoring I ² C bus
ALARM SIGNALS:	DC OK, AC Fail, Over temperature. Open Collector Signals 5V/0V (OK / Fail)
REMOTE ON/OFF:	ON = 0 ~ 0.6V or Short OFF = 2 ~ 15V or open
OPERATING TEMP:	0°C to +50°C at 100% load. Derate at 2.5% per °C to +70°C
ISOLATION:	Input - output: 3000VAC Input - ground: 2000VAC Output - ground: 500VAC
COOLING:	Two internal fans (front to back) with variable speed
HUMIDITY:	10 - 90% RH non-condensing
SHOCK & VIBRATION:	ETS 300 019
SAFETY:	UL60950, EN60950
INPUT/OUTPUT CONNECTOR:	Positronic PCB24W9M400A1. (FPS module) Mating #PCIB24W9F400A1

Instruction manual, application notes and further technical information is available from our website: www.amtex.com.au/ApplicationNotesPower.htm



FPS SERIES

AC/DC Single Output: 1000 - 3000 Watts

MODEL	Output			Power W
	V	A	(V Range)	
Models with Front Panel IEC Socket AC Input				
FPS100024-P	24V	40A	21.5 - 29.0	1000W
FPS100032-P	32V	31A	28.8 - 38.4	1000W
FPS100048-P	48V	21A	43.0 - 58.0	1000W
Models with Rear Panel Socket AC Input				
FPS100024	24V	40A	21.5 - 29.0	1000W
FPS100032	32V	31A	28.8 - 38.4	1000W
FPS100048	48V	21A	43.0 - 58.0	1000W
1U x 19in Rack Assemblies				
FPS-S1U-P	Rack for 3 x FPS1000 front panel IEC single output DC Bus			
FPS-S1U	Rack for 3 x FPS1000 rear panel IEC single output DC Bus			

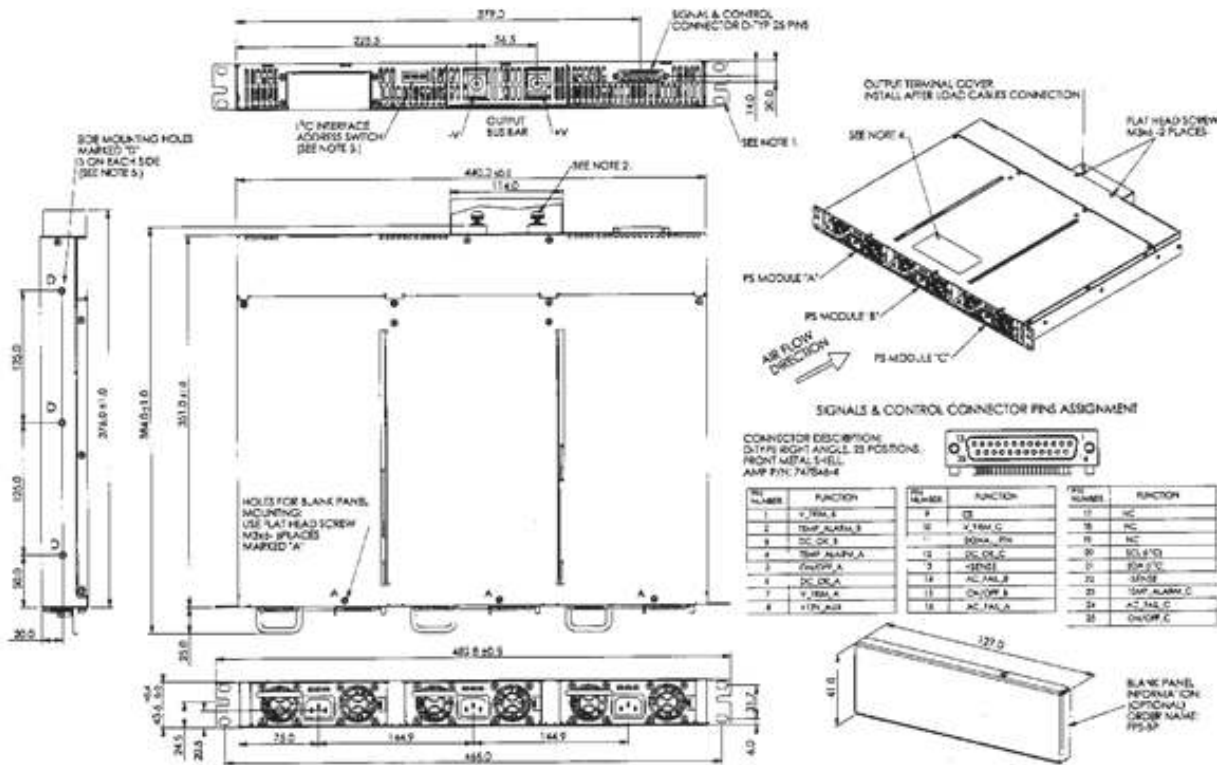


FPS-S1U Rack Assembly with rear IEC input sockets



FPS-1000P with front panel IEC sockets

FPS - S1U/P Rack



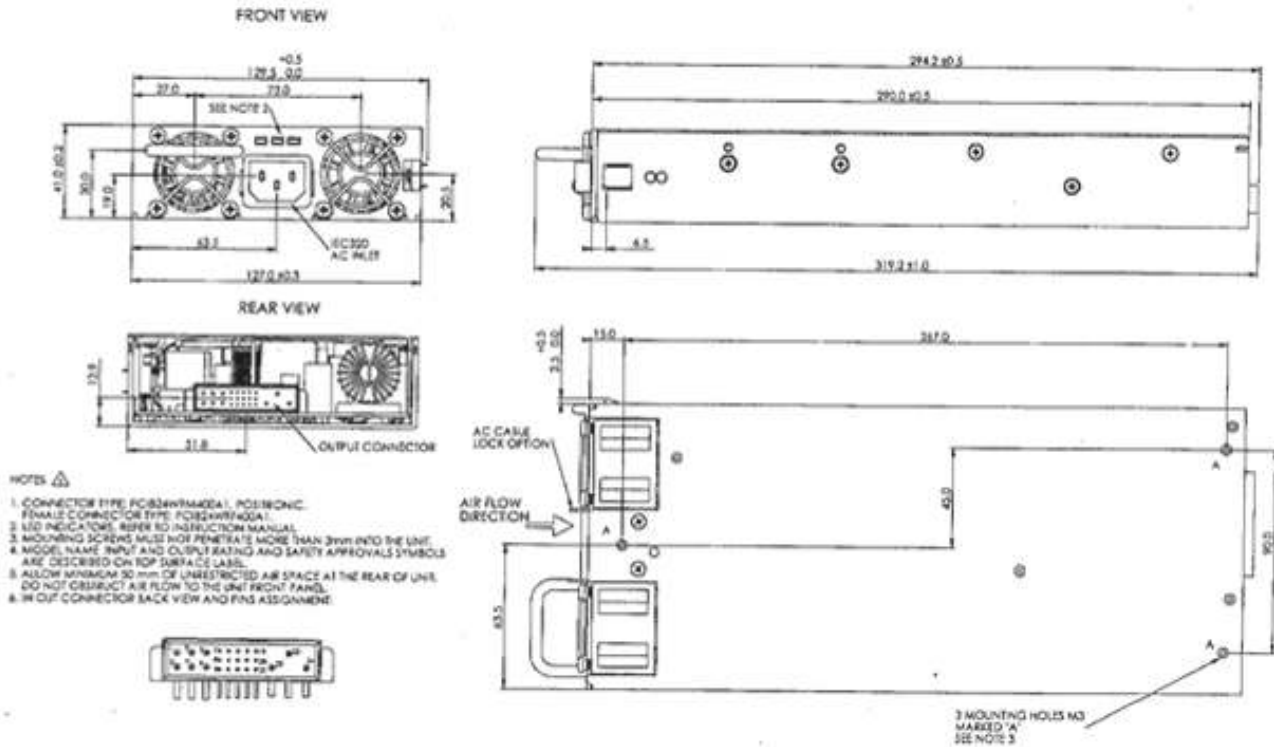
NOTES

1. MOUNTING HOLES FOR 19" RACK. USE M4x12 TO FIX THE UNIT TO A RACK.
2. M4x4 SCREWS FOR LOAD WIRES FIXING. USE ALL LUGS FOR THE LOAD WIRES. RECOMMENDED TIGHTENING TORQUE: 4.5-5.4 N.m.
3. REFER TO PIS INSTRUCTION MANUAL FOR SETTING DETAILS.
4. MODEL NAME, VOLTAGE AND CURRENT RATING AND SAFETY APPROVAL SYMBOLS WILL BE SHOWN HERE ACCORDING TO THE SPECIFICATIONS.
5. MOUNTING HOLES AND FIXING BRACKETS. USE M3x5 SCREWS FOR THE BRACKETS TO THE CH-ASSIS. SCREWS MUST NOT PENETRATE THE CHASSIS MORE THAN 1mm & THE FPS-S1U/P RACK IS SHOWN WITH 3 FPS1000P UNITS INSTALLED.

FPS SERIES

AC/DC Single Output: 1000 - 3000 Watts

FPS1000-P (Front Panel IEC connector)



FPS1000 (Rear Panel Positronic connector)

